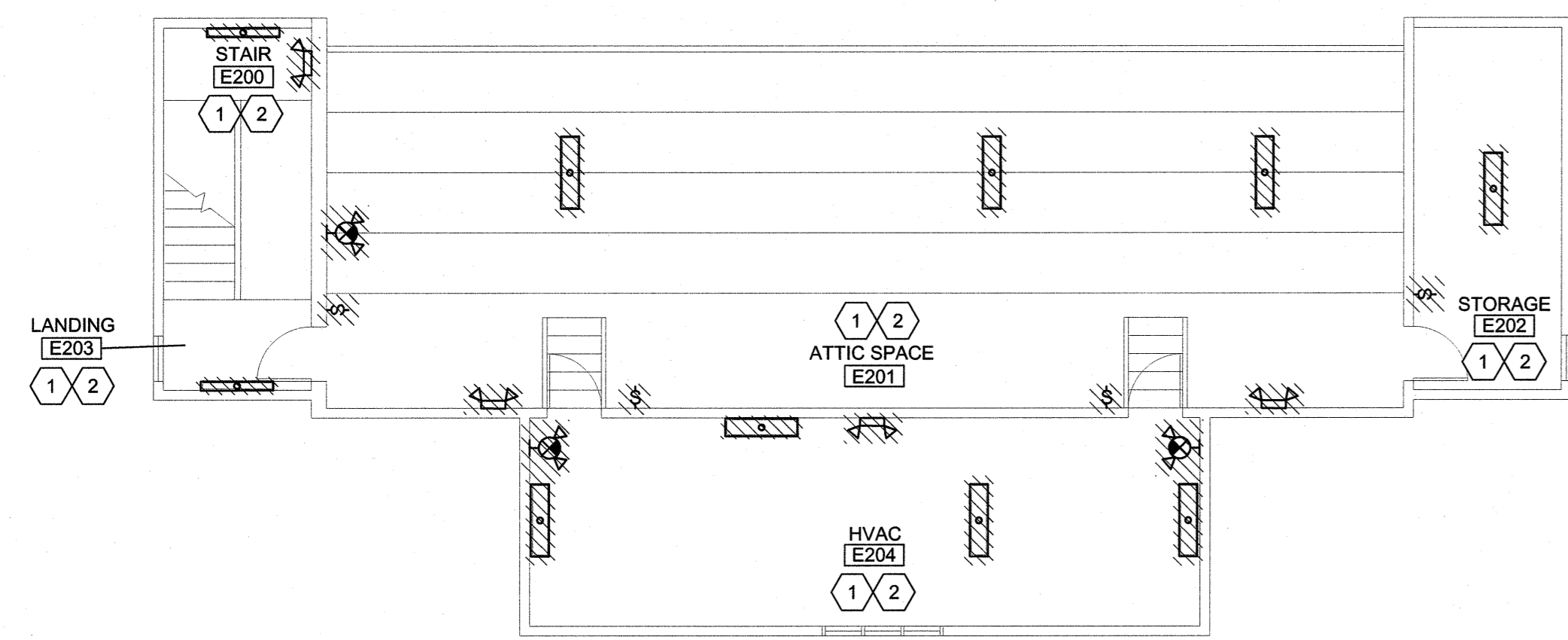
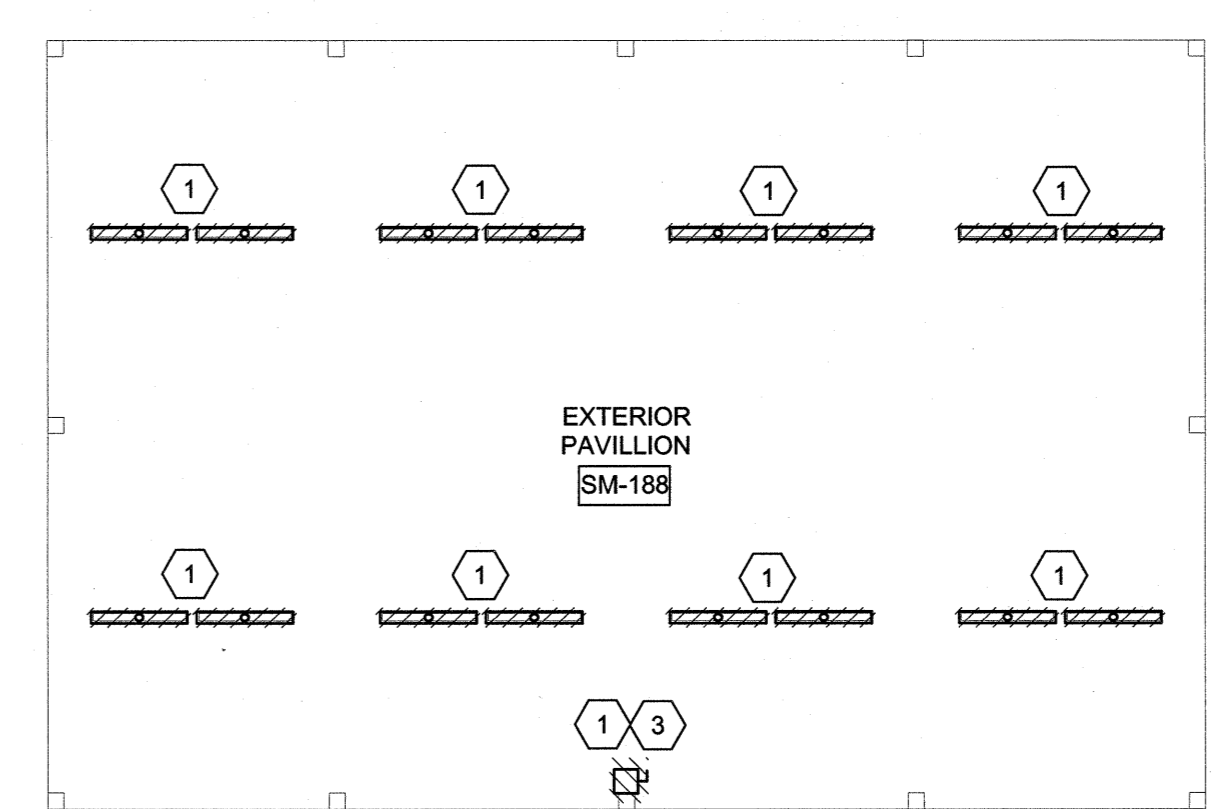
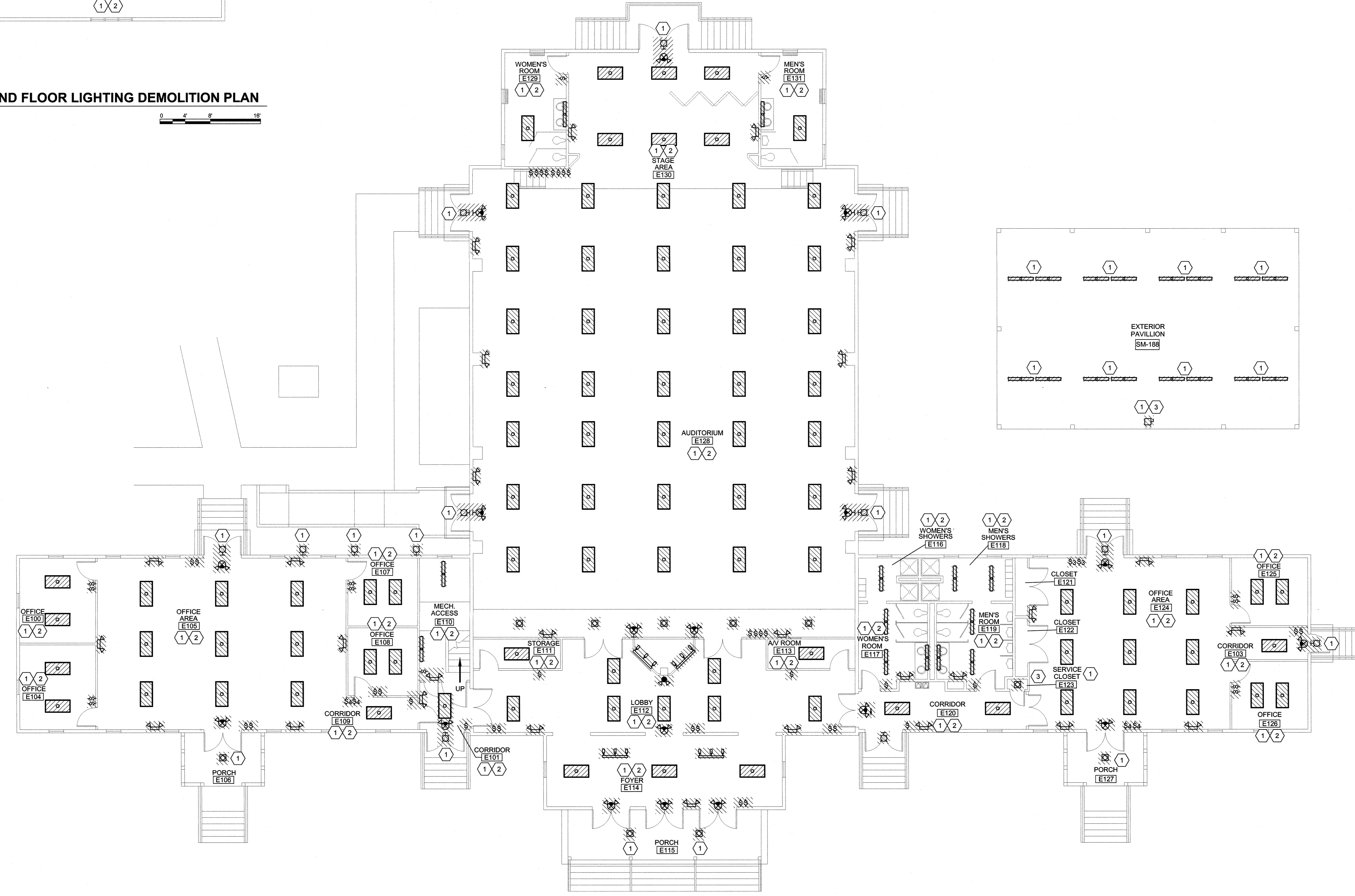


REVISIONS		
SYM.	DATE	APPROVED

DEMOLITION KEYED NOTES	
1	LIGHT FIXTURES: REMOVE FIXTURE, BOXES, CONDUIT AND CONDUCTORS COMPLETE TO SOURCE
2	SWITCHES: REMOVE DEVICE, CONDUIT AND CONDUCTORS IN ENTIRETY.
3	PAVILLION DISCONNECT: REMOVE DISCONNECT, PROTECT FEED CONDUIT DURING DEMOLITION AND CONSTRUCTION FOR RE-USE. REMOVE FEED CONDUCTORS IN ENTIRETY TO PANEL C.



**1 SECOND FLOOR LIGHTING DEMOLITION PLAN**  
1/8" = 1'-0"

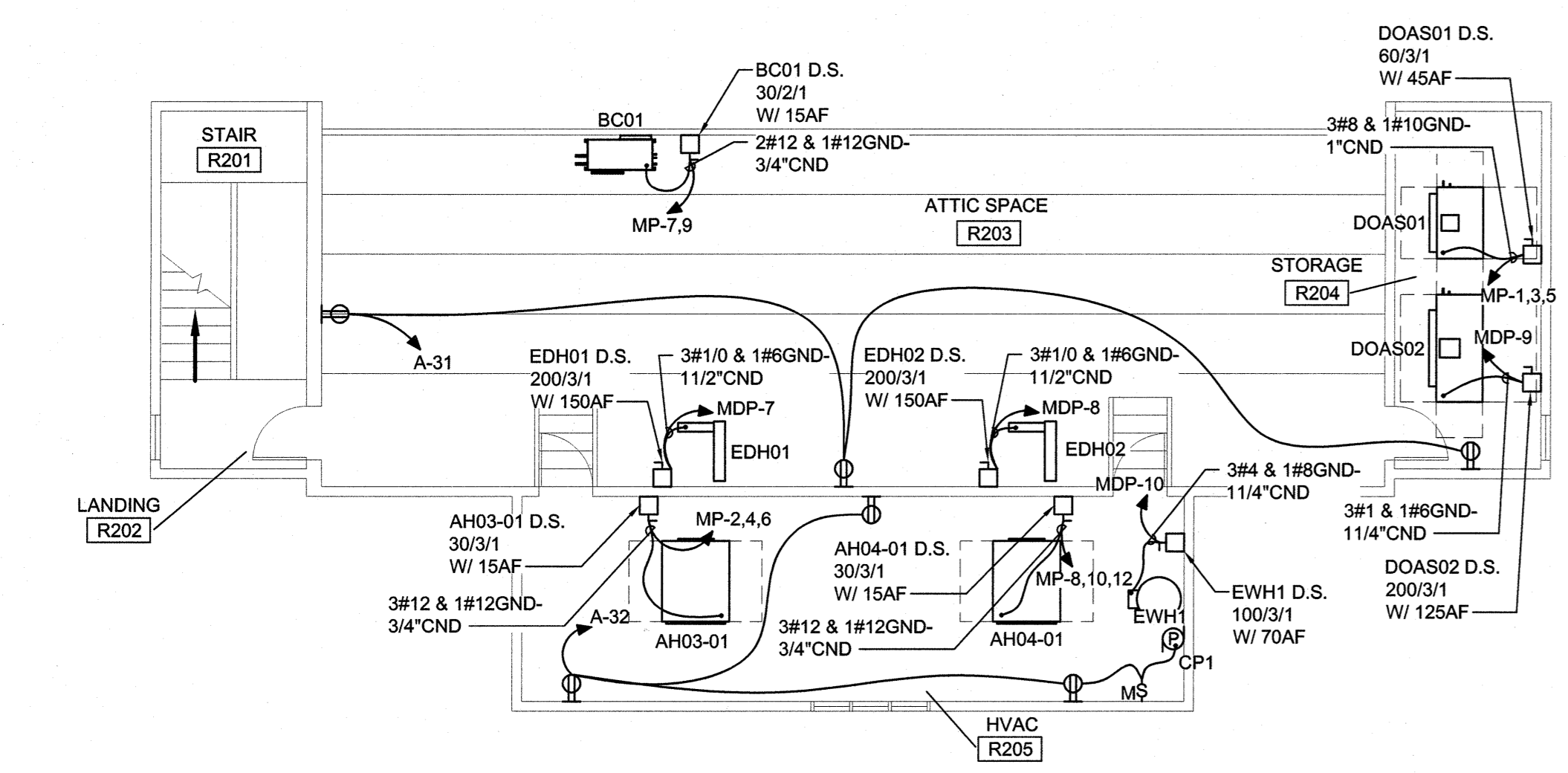


**2 FIRST FLOOR LIGHTING DEMOLITION PLAN**  
1/8" = 1'-0"

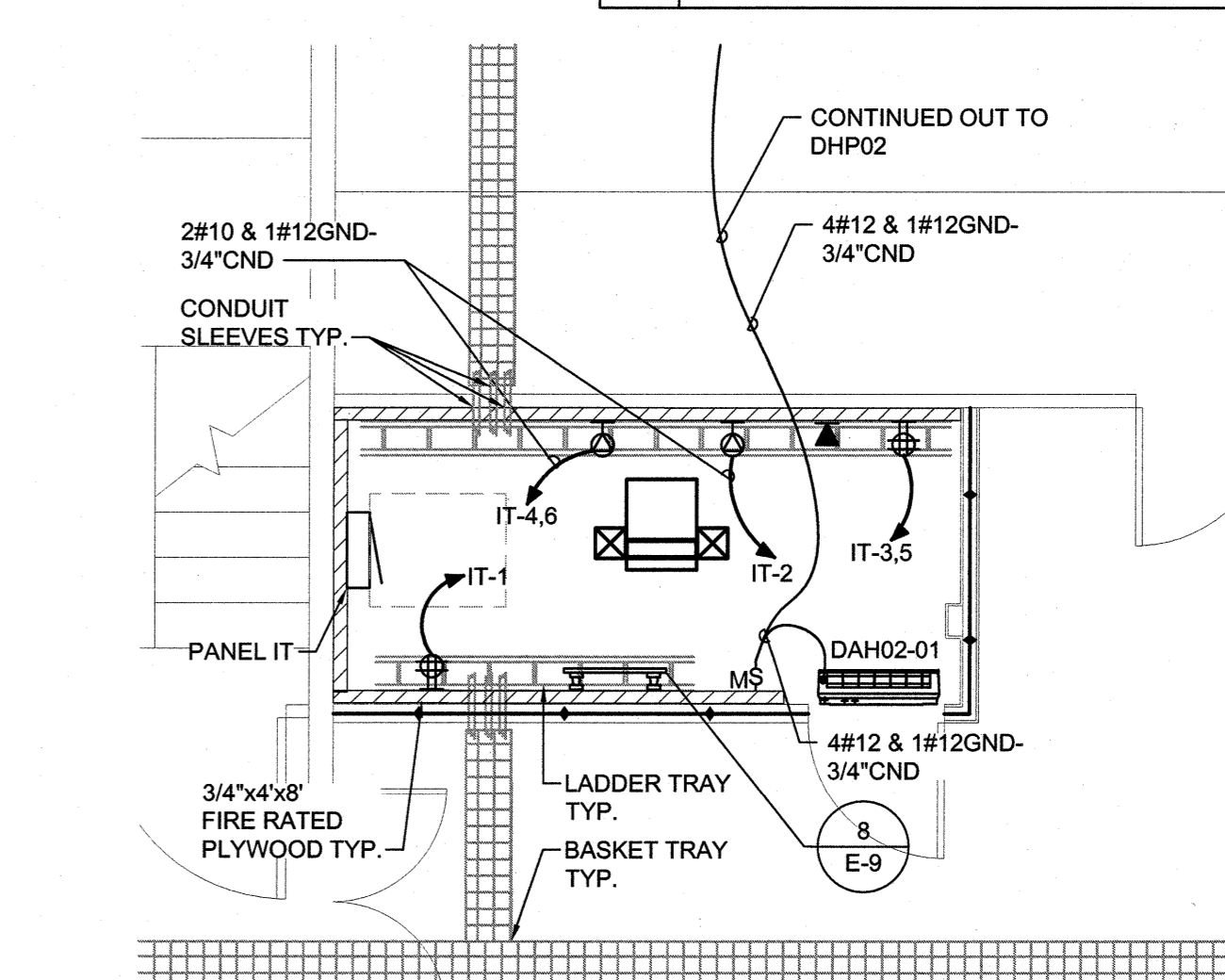
SEE DISCLOSURE OF INFORMATION STATEMENT ON SHEET T-1

<b>CBHF</b> Engineers, PLLC 2246 Yaupon Drive Wilmington, NC 28401 Phone: 910.791.4000 Fax: 910.791.5268 www.cbhfindesign.com	SHEET TITLE: <b>ELECTRICAL LIGHTING DEMOLITION PLAN</b>		<b>E-11</b>
	TALLEY & SMITH ARCHITECTURE INC. P.O. BOX 518 SHELBY, NC 28151-0518 409 EAST MARION ST. SHELBY, NC 28150		
	DEPARTMENT OF THE NAVY <b>MARINE CORPS BASE</b> CAMP LEJEUNE, NORTH CAROLINA		RENOVATION BLDG. M-104 CAMP LEJEUNE, NORTH CAROLINA
	DES. JLG DR. JLG CHK. JPF SUBMITTED BY: DESIGN DIR. T.H. BURTON, PE		
APPROVED:	DATE:	SIZE: <b>F</b> CODE IDENT. NO.: <b>80091</b>	NAVFAC DRAWING NO.: <b>60025153</b> CONST. CONTR. NO.: N40085-19-8-0034
SATISFACTORY TO:	DATE:	SCALE: NOTED	SPEC: 05-19-0034 SHEET 55 OF 57

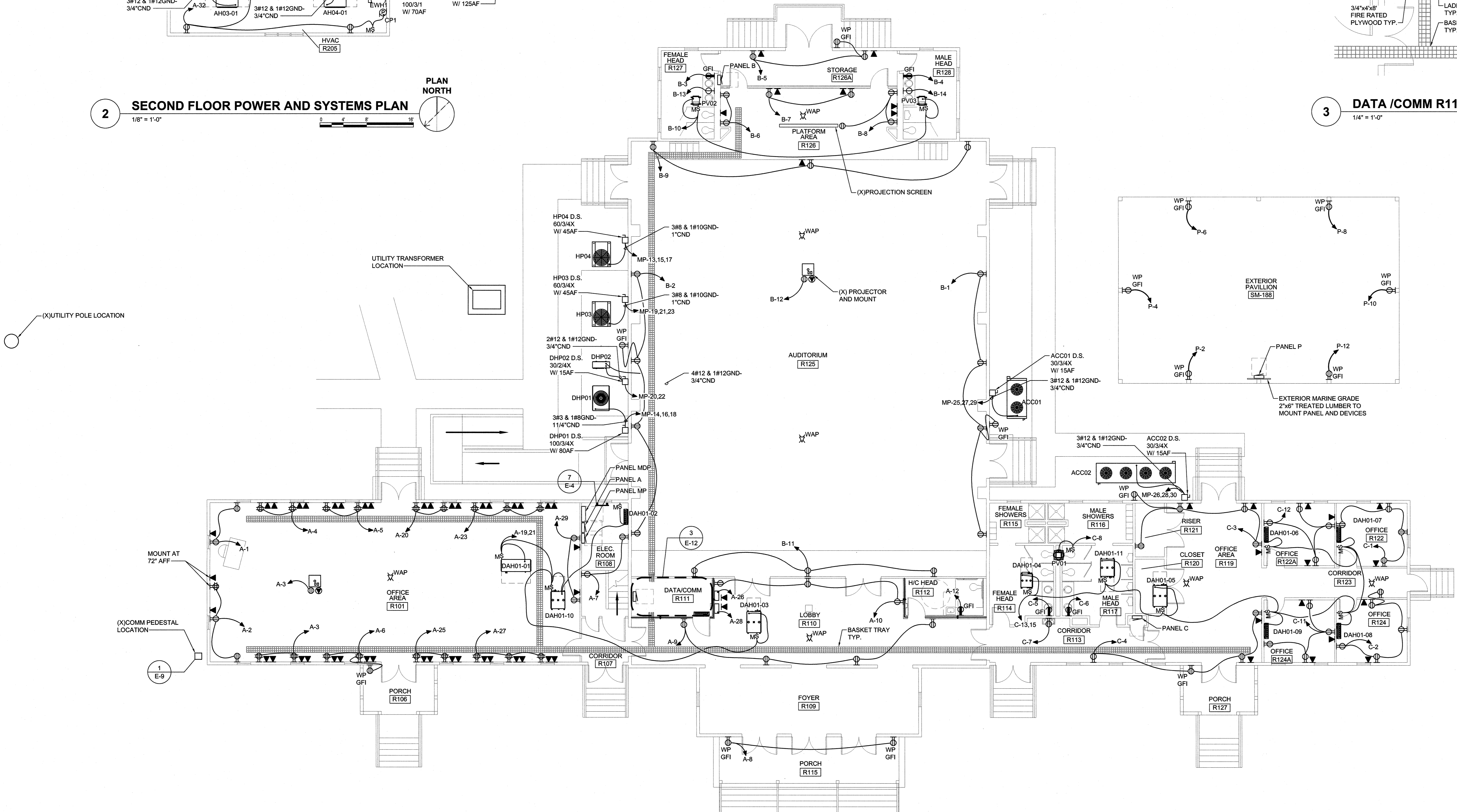
REVISIONS		
SYM.	DATE	APPROVED



**2 SECOND FLOOR POWER AND SYSTEMS PLAN**  
1/8" = 1'-0"  
PLAN NORTH



**3 DATA / COMM R111 FLOOR PLAN**  
1/4" = 1'-0"  
PLAN NORTH

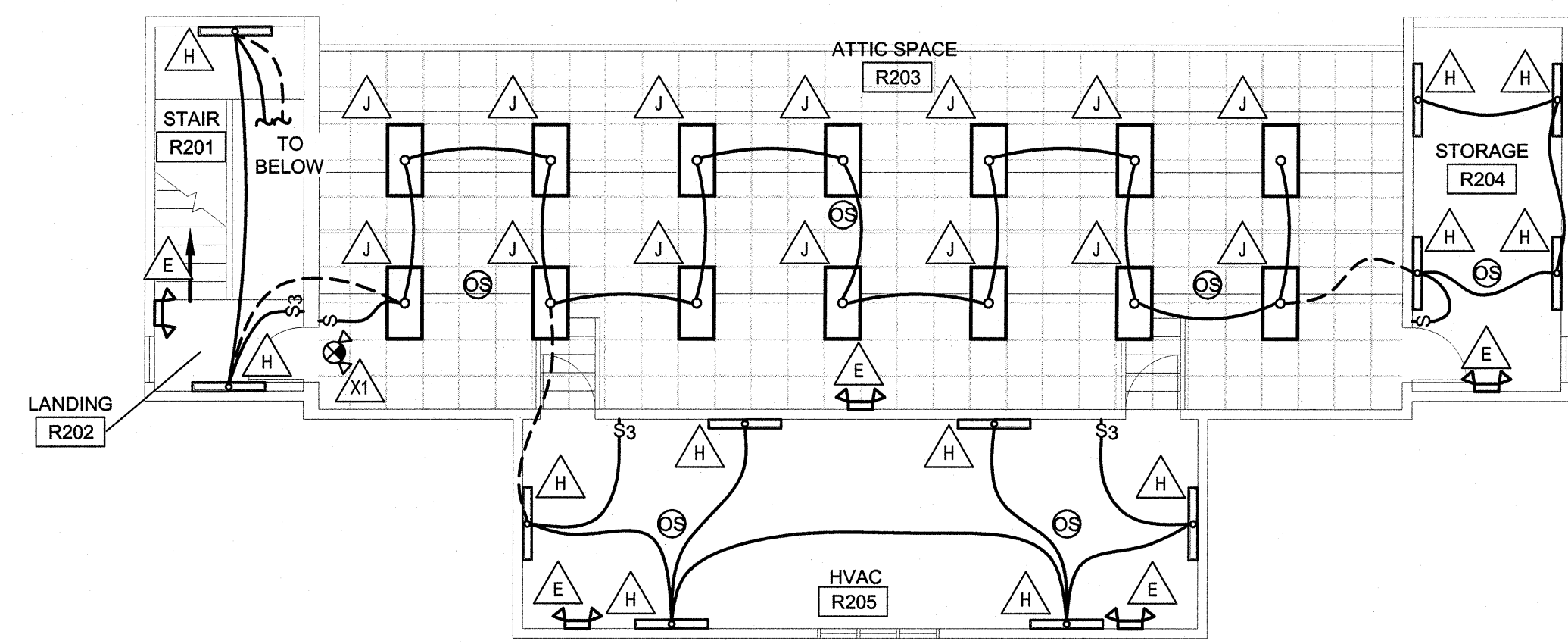


**1 FIRST FLOOR POWER AND SYSTEMS PLAN**  
1/8" = 1'-0"  
PLAN NORTH

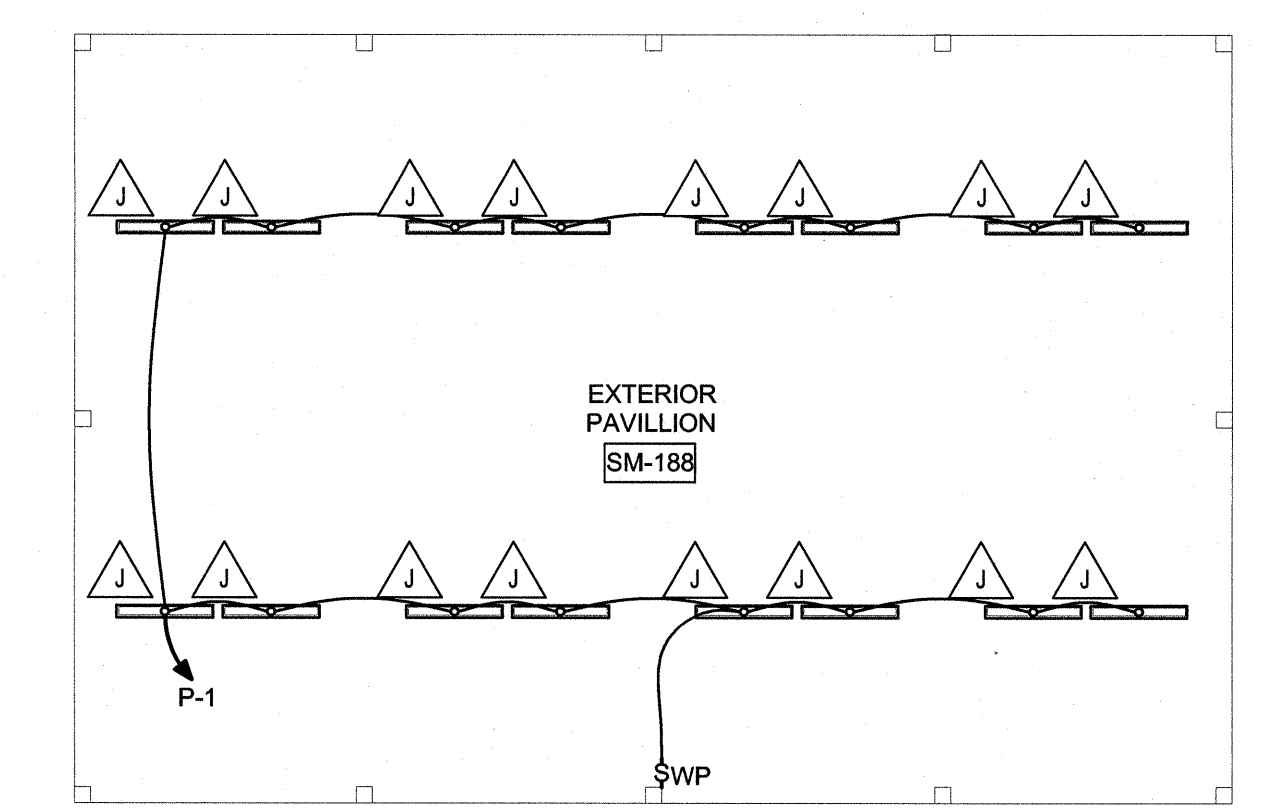
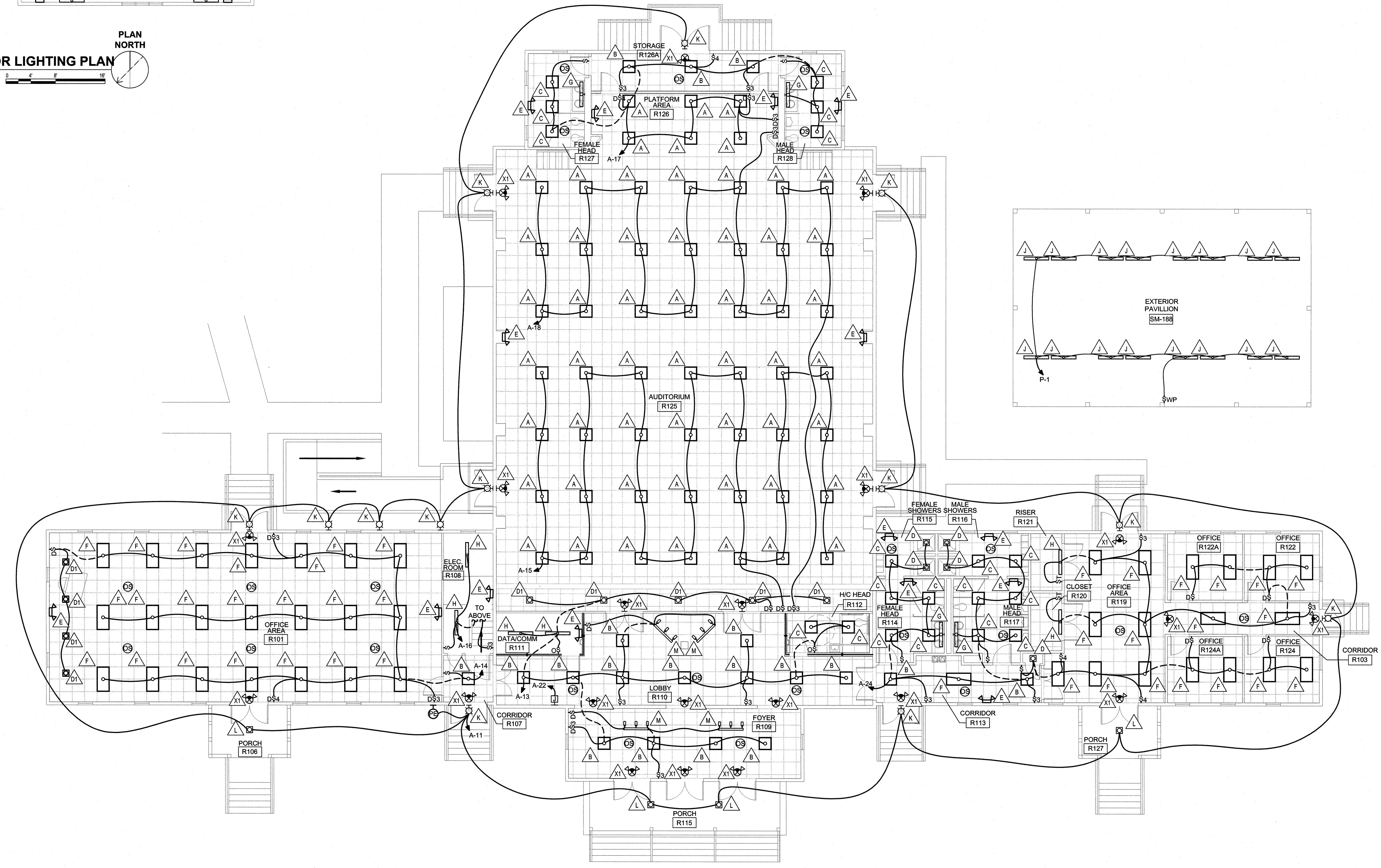
SEE DISCLOSURE OF INFORMATION STATEMENT ON SHEET T-1

<b>CBHF</b> Engineers, PLLC 2246 Yaupon Drive Wilmington, NC 28401 Phone: 910.791.4000 Fax: 910.791.5266 www.cbhfengineers.com © 2009-2010 CBHF Engineers, PLLC	SHEET TITLE: <b>ELECTRICAL POWER AND SYSTEMS FLOOR PLAN</b>		<b>E-12</b>
	TALLEY & SMITH ARCHITECTURE INC. P.O. BOX 518 SHELBY, NC 28151-0518 409 EAST MARION ST. SHELBY, NC 28150 DES. JLG DR. JLG CHK. JPF SUBMITTED BY: DESIGN DR. T H BURTON, PE APPROVED:		
DEPARTMENT OF THE NAVY <b>MARINE CORPS BASE</b> CAMP LEJEUNE, NORTH CAROLINA RENOVATION BLDG. M-104 CAMP LEJEUNE, NORTH CAROLINA		CODE IDENT. NO. <b>80091</b> NAVFAC DRAWING NO. <b>60025154</b> CONST. CONTR. NO. N40085-19-B-0034	
DATE: 06/28/2019 SATISFACTORY TO:		DATE: 05-19-0034 SCALE: NOTED SPEC: 05-19-0034 SHEET 56 OF 57	

REVISIONS		
SYM.	DATE	APPROVED



**2 SECOND FLOOR LIGHTING PLAN**  
 1/8" = 1'-0"  
 PLAN NORTH



**1 FIRST FLOOR LIGHTING PLAN**  
 1/8" = 1'-0"  
 PLAN NORTH

SEE DISCLOSURE OF INFORMATION STATEMENT ON SHEET T-1

<b>CBHF</b> Engineers, PLLC 2246 Yasupon Drive Wilmington, NC 28401 Phone: 910.791.6000 Fax: 910.791.5266 www.cbhfengineers.com	SHEET TITLE: <b>ELECTRICAL LIGHTING</b>		<b>E-13</b>
	TALLEY & SMITH ARCHITECTURE INC. P.O. BOX 518 SHELBY, NC 28151-0518 409 EAST MARION ST. SHELBY, NC 28150		
	DEPARTMENT OF THE NAVY <b>MARINE CORPS BASE</b> CAMP LEJEUNE, NORTH CAROLINA		RENOVATION BLDG. M-104 CAMP LEJEUNE, NORTH CAROLINA
	DES. JLG DR. JLG CHK. JPF SUBMITTED BY: DESIGN DIR. T.H. BURTON, PE		
APPROVED:	DATE:	SIZE: <b>F</b> CODE IDENT. NO.: <b>80091</b>	NAVFAC DRAWING NO.: <b>60025155</b> CONST. CONTR. NO.: <b>N40085-19-B-0034</b>
SATISFACTORY TO:	DATE:	SCALE: NOTED	SPEC. 05-19-0034 SHEET 57 OF 57